

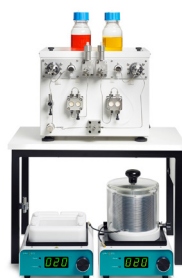
# FlowLab Plus

## Flow Chemistry Systems Enabling Smart Flow Chemistry

FlowLab Plus is an automated modular flow chemistry system for maximum flexibility.

This customisable flow chemistry system is based around the Asynt Binary Pump module dual channel reagent delivery system.

FlowLab Plus offers the chemist the optimal solution in terms of flexibility and scope for modification. The system can be configured in a variety of ways with different pump and reactor options to run both manual and automated flow chemistry reactions. Two binary pumps can be combined to give optimum flexibility. All FlowLab Plus systems may be operated via dedicated Wi-Fi.



### FlowLab Plus Flow

Customisable, multi-channel flow reactor system with an operating range -40 °C to 260 with up to 300 °C as an option. Compatible with our full range of Coil, GSM and Column reactors, with options for fully automated multi-experiment setup, plus Wi-Fi remote system programming and control option.



### FlowLab Plus Multi-X

Enables reaction optimisation and method development, varying reaction parameters such as temperature, residence time and stoichiometry, with automated collection over multiple reactions.



### FlowLab Plus Auto-LF

A powerful system upgrade combining automated reagent delivery and collection, allowing the user to explore reaction optimisation with reagent screening and generate libraries of compounds.

Up to a hundred experiments can be automated, each with customised experimental conditions.

**The modular nature of FlowLab and FlowLab Plus allows the use of any combination of flow reactors, heating, and cooling modules, and the Asynt range of continuous photochemistry reactors.**

# FlowLab

## Flow Chemistry Systems

### Modular and Accessible

FlowLab is an affordable and easy-to-use modular flow chemistry system that is ideal for education, research purposes and anyone wishing to carry out flow chemistry without the associated costs of a sophisticated fully automatic system.

The FlowLab system is available in three handy configurations:



### FlowLab

FlowLab is built with the HotCoil heated reactor station, suitable for reaction temperatures from ambient to 260 °C standard or up to 300 °C if required.



### FlowLab Cold

FlowLab Cold operates from -40 °C to 150 °C with an appropriate (recirculating) chiller; without the need for adding cryogenics such as dry ice or liquid nitrogen.



### FlowLab Column

FlowLab Column is designed specifically as an optimised flow chemistry system for heterogeneous catalysis. Suitable for temperatures of up to 150 °C for glass and 260 °C for stainless steel columns.

Talk to us and find the perfect FlowLab or FlowLab Plus for your Flow Chemistry...

