

## TECHNICAL DATA SHEET

## 'LABGAS+' - Intelligent Gas Generators

### Features

Range of Flow-rates  
With or without Internal oil-free  
air compressor  
Compact and Quiet design  
Purity 99.9995% - 98%  
Auto-run facility  
Energy saving mode  
Outlet flow indicator (% flow)  
Trend graphs into MS excel  
Alarms with help menu  
Audible alarm sounder  
Remote access via internet

### Applications

Pharmaceutical & Laboratory:-  
General laboratory  
GC  
ELSD  
LC/MS  
ICP  
TurboVap

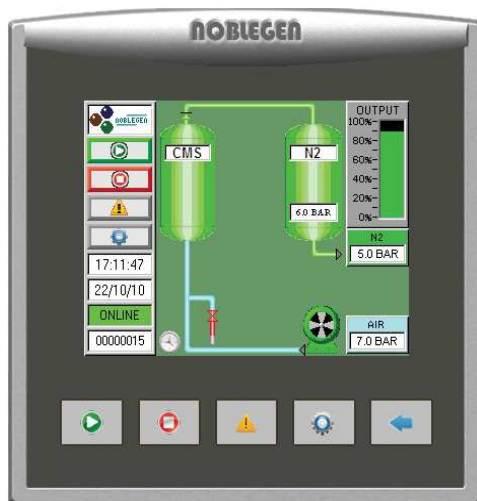
### Options

Hazardous Area Ex Version  
Custom Screens  
Oxygen analyser  
Dew-point sensor

**'LABGAS+', is the latest range of  
PSA Laboratory Gas Generators from  
Noblegen Products.**

Utilising the reliable and efficient PSA technique of separating Nitrogen and Oxygen is used to produce high quality Nitrogen Gas at various flows and purities (see performance data sheets).

The Generators are controlled using the latest in HMI touch screen technology to display the process in real-time, inlet / outlet pressures, Trend graphs and much more.....



model NG1-1 shown

### New features include:-

Alarm display with help menu  
Outlet Flow Indicator  
Trend graphs for QA reporting  
Energy saving mode  
Remote access to Screen using internet  
Service alarm and service records page  
Oxygen Analyser (optional)

### Overview:-

LABGAS+ Nitrogen Generator range from Noblegen Products is your reliable and efficient alternative to conventional high pressure cylinder and liquid gas supplies. Taking away the on-going costs, safety considerations and transportation of traditional gas supplies, the 'LABGAS+' on-site Nitrogen systems are some of the most advanced and intelligent available. The control system gives the user all the information necessary to ensure an efficient and consistent supply of gas is always available. From the process to flow and alarms, including auto-start / stop function, Trend graphs, service alarm and service records page, there is simply no other laboratory nitrogen system quite like LABGAS+.

### ASYNT

29 Hall Barn Road  
Industrial Estate  
Isleham, Ely  
Cambridgeshire  
CB7 5RJ  
UNITED KINGDOM  
T: +44 (0)1638 781709  
F: +44 (0)1638 781706  
E: sales@asynt.com  
W: www.asynt.com

## TECHNICAL DATA SHEET

## 'LABGAS+' - Intelligent Gas Generators

### Features

Range of Flow-rates  
with or without internal oil-free  
air compressor  
Compact and quiet design  
Purity 99.9995% - 98%  
Auto-run facility  
Energy saving mode  
Outlet flow indicator (% flow)  
Trend graphs into MS excel  
Alarms with help menu  
Audible alarm sounder  
Remote access via internet

### Applications

Pharmaceutical  
General laboratory  
GC  
ELSD  
LC/MS  
ICP  
Turbovap

### Options

Hazardous Area Ex version  
Custom screens  
Oxygen analyser  
Dew-point sensor

### ASYNT

29 Hall Barn Road  
Industrial Estate  
Isleham, Ely  
Cambridgeshire  
CB7 5RJ  
UNITED KINGDOM  
T: +44 (0)1638 781709  
F: +44 (0)1638 781706  
E: sales@asynt.com  
W: www.asynt.com

Nitrogen Outlet Flowrate - NI/min vs Oxygen Concentration									
Model	5ppm	100ppm	0.1%	0.5%	1.0%	2.0%	outlet pressure (barg)	Dims -0	Dims -1
NG1	1.0	-	-	-	-	-	5.0	size 1	size 1
NG3	3.0	-	-	-	-	-	5.0	size 3	size 3
NG4	-	-	3.0	4.0	-	-	5.5	size 1	size 1
NG5	-	4.0	6.0	8.0	10.0	12.0	5.0	size 3	size 3
NG6	-	-	16.0	30.0	35.0	40.0	7.0	size 3	size 3
NG7	-	-	10.0	15.0	20.0	25.0	7.0	size 3	size 3

Specification based on 7barg (102psig) air inlet pressure @ 20°-25°C (68°-77°F) ambient air temperature. For inlet pressures and ambient air temperature outside these conditions please contact Noblegen technical department.

Ambient Temp Range	5-30 °C (41-86 °F)
Air Inlet Pressure	8 bar g (116 psi g)
Nitrogen Outlet Pressure*	See table above
Air Inlet Requirement	Dew-point -40 °C (-40 °F)
	Particulate: <0.1 micron
	Oil: <0.01 mg/m <sup>3</sup>
Electrical Supply	230v a.c. / 1ph / 50-60Hz
	115v a.c. / 1ph / 50-60Hz
Socket Inlet	IEC type C14 (fused) 10A max
Inlet / Outlet Connections	1/4" BSPP

Dimensions & Weights				
Enclosure size	Height mm	Width mm	Depth mm	Weight Kg
Size 1	650	320	300	55
Size 2	650	320	550	65
Size 3	700	400	660	85
Size 3 enclosure has castors: add 50mm to height				
Shipping dimensions add 50mm to each above				
Shipping weight add 17kg to each above				

