

DrySyn Classic

Time taken to boil 40 mL water using a DrySyn Classic base with 100 mL insert

Equipment Used:

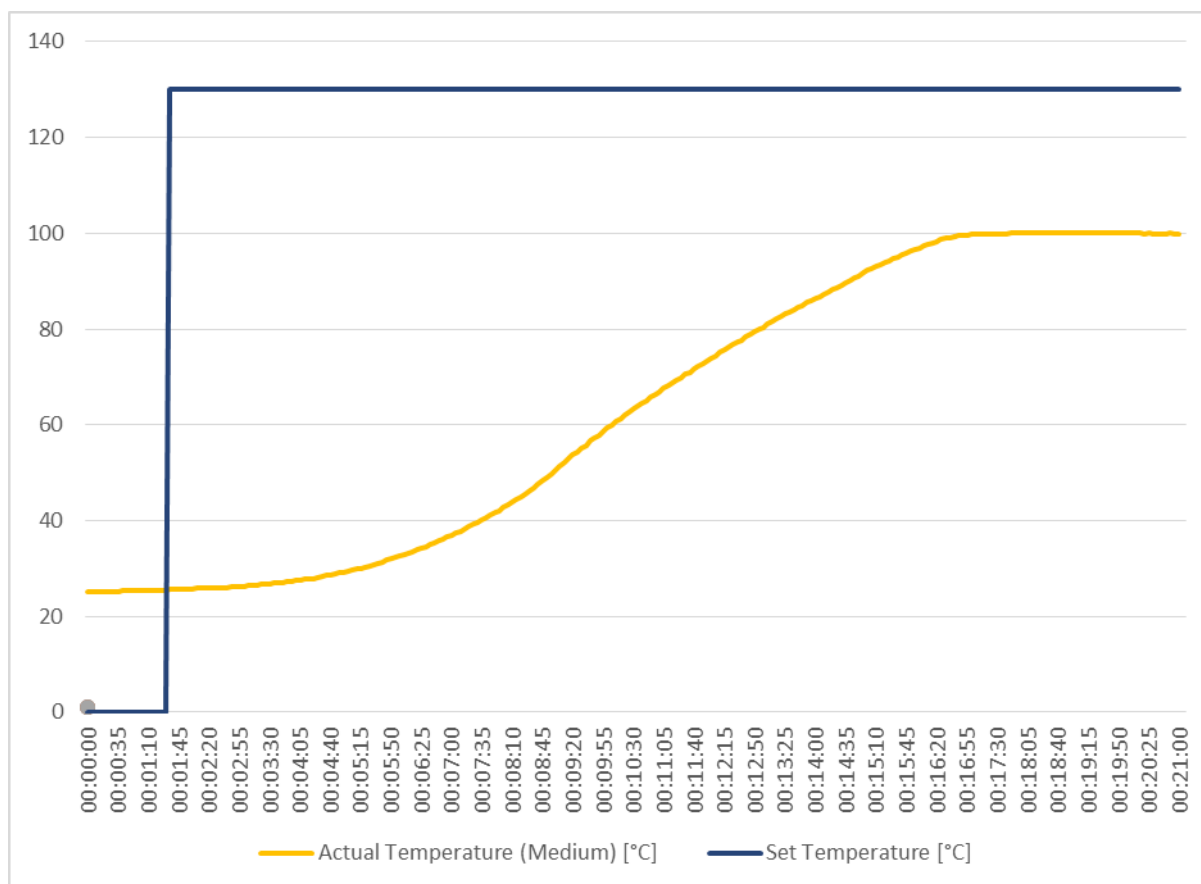
- RCT Digital Hotplate set in 2P mode with external PT1000 attached
- DrySyn Classic 1 L base with 100 mL insert
- 100 mL Round bottomed flask containing 40 mL of water
- LabWorldSoft V6



Experiment Steps:

- Stirring set to 350 RPM
- Step 1: Allow DrySyn to equilibrate at 25 °C (Solution temperature)
- Step 2: Hotplate set to 130 °C and heating rate recorded (Solution temperature)

Experiment Results:



Time to boil (+/- 1%) = 15 minutes